



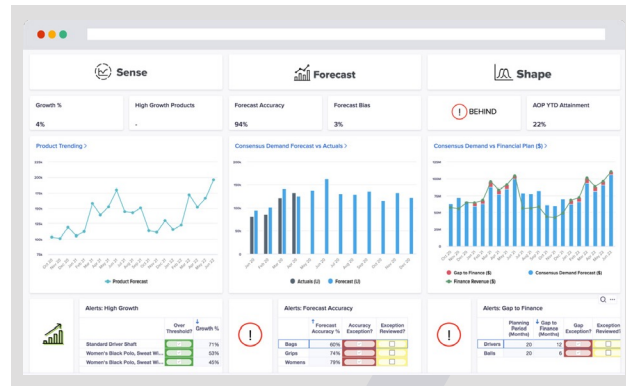
The Anaplan User Interface

Every business planner has a voice and with Connected Planning technology, every single voice can help inform and improve the decision-making process. It starts with democratizing the planning process and is sustained through highly capable planning technology that intuitively connects people, data, and plans through an engaging experience.

Anaplan's user experience (UX) combines the capabilities of its user interface (UI), Mobile, and process orchestration features to intuitively guide people to the right places at the right time across all devices and solutions.

Key benefits

- Ease of use for actionable insights right at your fingertips.
- Flexible collaboration across teams for quick iterations and responsiveness to changes.
- Ability to design business processes, usability, flexibility, and delegation for end users.
- Capabilities that solve immediate and forward-looking challenges and opportunities.
- Increased productivity with faster, direct access to your most important information and applications. Allows users to take quicker, more informed actions.
- Guides the end-user experience. Takes you to exactly where you need to be and ensures quicker execution. Increases user satisfaction with new personalization.
- Multi-device accessibility simplifies your life with a responsive, modern web UX across tablets, desktops, and phones.
- Speed and scale with an industry-leading planning platform.
- Easy implementation and rollout across the enterprise, leading to self-sufficient business owners and greater IT consistency and governance.
- Native collaboration means faster user adoption to become self-sufficient and build models independently.
- Business self-service capabilities to own, connect, and synchronize various parts of the business using large volumes of data in Anaplan models.



Simple and efficient—more people can do more activities

Enhance your ability to collaborate, participate, and execute agile planning across your organization with Anaplan's sleek cloud-based platform.

Intuitive and self-service capabilities allow users to use the platform without expensive training

Anaplan's Connected Planning platform elevates planning into a conversational, inclusive process through an engaging user experience that transforms planning into a collaborative, actionable, and effortless team sport.

Empower users to respond to changes faster

With Anaplan, you can remove manual processes to respond to business changes faster and make decisions more confidently.

Innovate and deliver rich capabilities faster

Leverage data-rich dashboards and analysis to innovate and deliver business capabilities faster.

“Increasingly, value isn't driven by knowing how things work. It's driven by knowing how things work together.”

Jack McGarry, Group CFO



Key features and capabilities

User personalization

Easily and quickly build plans and execute tasks.

- Navigate from the classic to the new UX with a click of a button, and access across any device.
- A guided end-user experience takes users to exactly where they need to be.
- Increase productivity with faster, direct access to the most important information and applications.

Card and card template library

A card is an interactive component that you can create and add to a page.

- Create text, grid, chart, and KPI cards.
- Users can create and save cards in a card template library so they can be reused on different pages.

Pages

Custom-built pages replace classic dashboards for enhanced data visualization.

- Pages visualize data from modules to end users.
- A page can have one of two layouts—a board or a worksheet—depending on the type of information presented.

My Pages

Empower end users to create personalized pages.

- Create pages with the information users need, in the format they want.
- Personalized reports can track plans and use preferred visuals to analyze results and present data.
- Impacts are visualized immediately.

Worksheets

Used to present large grids for editing and analyzing detailed data, worksheets are interactive grids that display data from Anaplan models.

- Worksheets are used to present large grids for editing and analyzing detailed data.
- Module views provide end users with the most relevant data for their planning and analysis.

Collaboration

Engage users and execute seamlessly in context.

- Commenting lets you bring users directly into conversations. Comment on cards, separate discussions by context, and tag users with an @mention to notify them.
- Share boards and worksheets with users to drive more informed plans.
- Alert specific users with notifications for smooth handoff.
- Reduce communication loops by letting users know when it is time to take action with Notify Actions.
- Integrate Anaplan with Slack to share pages directly with colleagues and reach new users via Anaplan Slackbot.
- Keep up with the conversation at a glance with comment summary view. See all comments on a page all within the UX.
- Gain greater visibility into upcoming planned downtimes with in-product notifications.

Boards

Create more visual, interactive dashboards that display high-level information, such as key performance indicators and charts.

- Boards display data from Anaplan models, delivering instant insights.
- Non-technical users can see the most important data at a glance and dive into more detail.
- The board designer can be used to build and design the UX for business end users.

New Modeling Experience

Drive model building efficiency with UX enhancements.

- Open lists as discrete object tabs.
- Display dashboards and modules in the new navigation.
- Left-hand navigation provides faster access to modeling screens and objects.
- Quickly swap between models using global navigation model selector.
- Share and open URLs with deep linking for specific objects.
- Flexible formula editor, formula indentation, and the ability to re-open landing dashboard

Extensions

Anaplan offers extensions for Microsoft Excel, PowerPoint, Office 365 and Google Sheets to expand the reach of Anaplan platform and help users report, present, and collaborate with Anaplan data from their preferred third-party applications.

- Eliminate silos between online and offline reporting and analysis.
- Enable a faster feedback loop for improved agility throughout the decision-making process.
- Experience highly performant ad-hoc analysis and reporting.

Sort and filter

Sort the data in a grid on a published worksheet by a column or row in ascending or descending order.

- Filter data within grids via published worksheets and apply filters to all data types.
- When columns or rows are filtered, the primary grid updates to display only the data that match the conditions specified.

Conditional formatting

Color-code cells based on different cell values. Uses of conditional formatting include:

- Highlighting data of interest and carrying out variance analysis.
- Flagging values outside expected ranges.
- Identifying cells where action needs to be taken or that users need to interact with.
- Two- or three-color scales that apply a range of colors to cells, dependent upon their value within a specified range.

Management Reporting

Create highly formatted, customized reports to share key insights across the organization.

- Structured, highly formatted report page delivers, clear visuals for executive reports.
- Present various management and operational reports using specified presentation table and export PDF reports as a multi-page pack
- Conduct variance calculations on the fly to quickly make and execute plans that align with business goals and objectives

Anaplan Platform



Enterprise scale

The Anaplan platform connects your entire enterprise, scaling as you grow and handling real-time changes at any size. Calculations stay consistent and rapid for all data sets and any number of users.

Extensibility

The Anaplan platform collects and analyzes data in a single location, enabling both high-level and granular analyses and facilitating data-sharing with all stakeholders. APIs, ETL connectors, and built-in integrations easily communicate with other solutions.

Planning and modeling

Our in-memory Hyperblock® engine enables multi-dimensional scenario modeling with unlimited constraints, allowing companies to model even the most complicated business scenarios and stay ahead of changes in the market. The platform maintains 100% consistency across all model changes.

Engaging user experience

The Anaplan user experience puts the whole enterprise on a single platform. Model-building is intuitive and requires zero coding knowledge. The whole company shares real-time data across devices and solutions, enabling rapid decision-making and unprecedented flexibility.

Security

Robust protection keeps your business's data safe. Best-in-class security and compliance include BYOK, role-based access control, user management, SSO support with SAML 2.0 compliance, and data encryption at rest.

Intelligence

Embedded optimization including Optimizer™, over thirty predictive algorithms, and evolving AI capabilities transform complicated inputs into actionable recommendations. Machine learning intelligence speeds up decision-making across use cases.

About Anaplan

Anaplan (NYSE: PLAN) is a transformative way to see, plan, and run your business. Using our proprietary Hyperblock™ technology, Anaplan lets you contextualize real-time performance, and forecast future outcomes for faster, confident decisions. Because connecting strategy and plans to collaborative execution across your organization is required to move business FORWARD today. Based in San Francisco, we have 20 offices globally, 175 partners and more than 1,900 customers worldwide.

To learn more, visit [Anaplan.com](https://www.anaplan.com)